



*Configuring
Internet Information Server for use
with Linkar Suite*

March 2020

By Kosday Solutions



Configuring IIS for use with Linkar Suite

Linkar Manager uses *Microsoft's Kestrel* web server internally for **Linkar Server** configuration, **Linkar Rest API** *Api Keys* creation, **REST API** request management, **Linkar Server** monitoring, etc.

To access the described services from the outside, with special emphasis on the web services that use **Linkar REST API**, we can configure our network (firewalls, VPN, etc.) allowing access to the IP address defined in "*Linkar Server IP or Hostname*" and the port defined in "*Port to access Linkar Manager*".

But if we already have **Internet Information Server** installed and configured in our infrastructure, we can configure it to run all these services from it.

In this way, we can conveniently configure the Website from the IIS administrator, and use it to stop and start Linkar Manager, manage access links and SSL certificates, etc.

In this HowTo, we explain how to do it.

Previous requirements

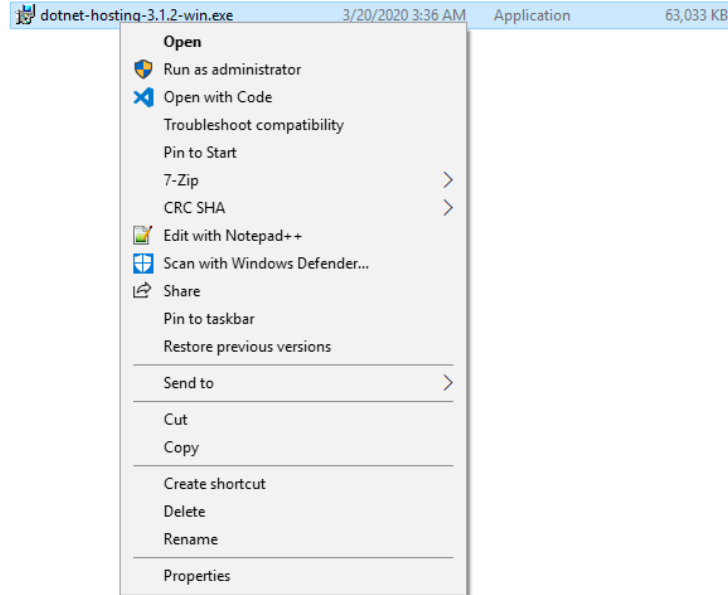
- Have Linkar Suite installed.
- Have Internet Information Server installed.
- Operating System Windows 7 or higher, or Windows Server 2012 R2 or higher.

Installing the .NET Core Hosting Set

You must download and install the following file. This is an **Internet Information Server** module that is necessary for the webserver to function properly. It is very important to run the installer as an administrator.

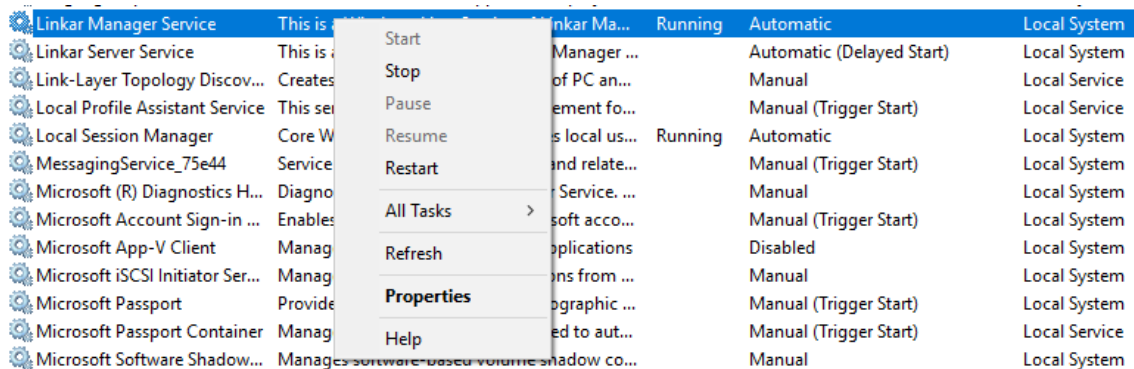
<https://dotnet.microsoft.com/download/dotnet-core/thank-you/runtime-aspnetcore-3.1.2-windows-hosting-bundle-installer>

Configuring IIS for use with Linkar Suite



Stopping Linkar Manager Service

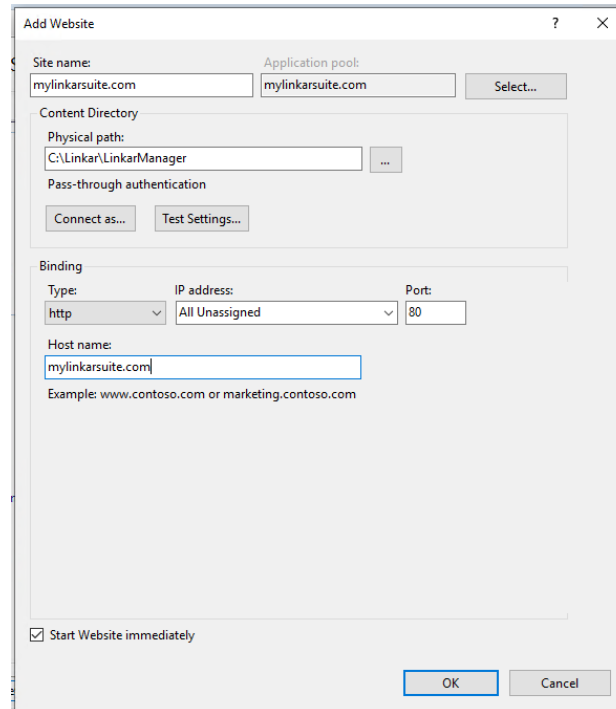
Stop the **Linkar Manager** service and set its startup configuration to *Manual*. The **Linkar Manager** process started by the **Internet Information Service** cannot run at the same time as the service.



Creating the Website

Configuring IIS for use with Linkar Suite

We will open the Internet Information Service Manager and create a new website.



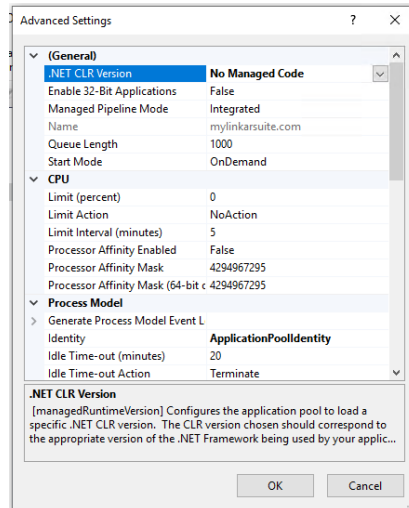
The Physical path must point to the Linkar Manager folder found inside the Linkar Suite directory (usually c:\Linkar\LinkarManager)

Configuring the Application Group

We must make the following modification in the configuration of the created Application Group:

- Set the *.NET CL version* value to *No Managed Code*.

Configuring IIS for use with Linkar Suite



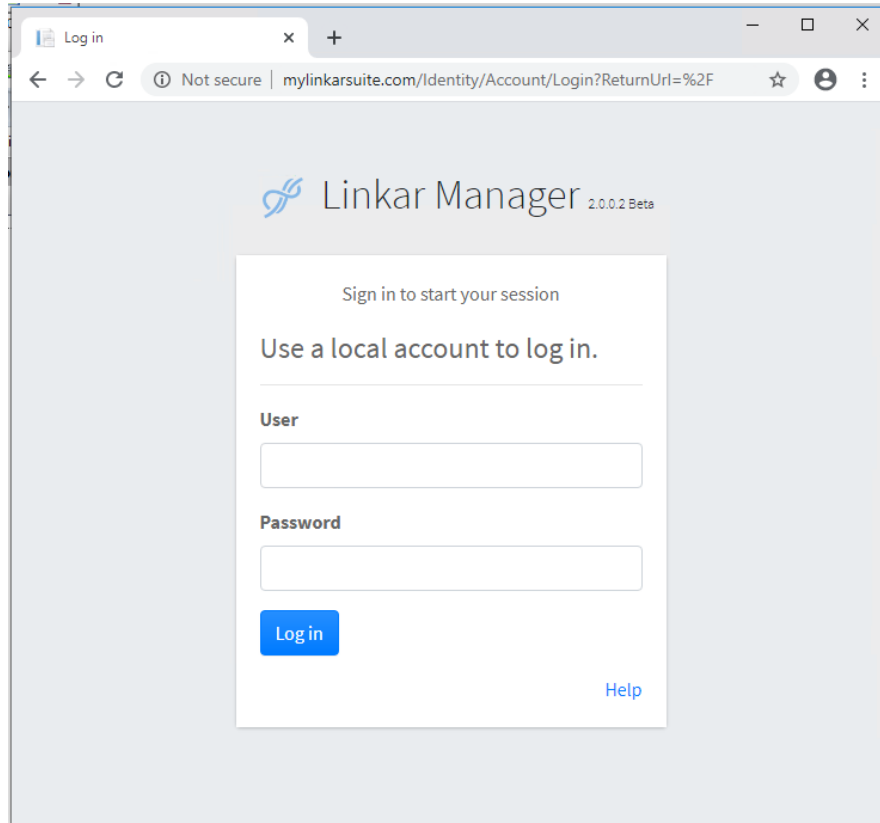
Accessing Linkar Manager from the new site

Now we can access **Linkar Manager** from the website we have just created:

<http://mylinkarsuite.com>

Remember that with this configuration, it is no longer necessary to start and stop the **Linkar Manager** service. IIS will take care of this task. Remember to set its startup configuration to *Manual*.

Configuring IIS for use with Linkar Suite



Conclusions

With these simple steps, you can configure your **IIS** web server to manage **Linkar Manager**. You will be able to make use of the functionalities offered by this web server and add **Linkar Manager** as one more website within your web server (IIS). In the same way, you can use web services with **Linkar REST API**.

The use of **IIS** allows us to unlink the IP / Hostname that we have configured for **Linkar Server** from the one used to access the **Linkar Manager** and the **Linkar REST API**.

Unlinking the IP where Linkar Manager listens (configured in IIS) from the IP where Linkar Server listens (configured in Linkar) allows us to limit access to Linkar Server in 3 different scenarios:

- Local Linkar Server local: If the Linkar server IP or hostname is 127.0.0.1 or localhost, we will make sure that only Linkar clients on the same machine can access it.

Configuring IIS for use with Linkar Suite

- Private Linkar Server: If the Linkar Server IP or Hostname is a Private IP or a hostname that resolves to a Private IP, we will ensure that only Linkar clients within the same network can access the Linkar Server. This requires the firewall to be configured to allow access from other external computers to the network. It may also require the firewall of the computer where the Linkar Server is hosted to be configured.
- Public Linkar Server: If the Linkar Server IP or Hostname is a Public IP or a hostname that resolves to a Public IP, we will ensure that any client can access the Linkar Server from anywhere. This may require the firewall to be configured to allow access.

But you can always access Linkar Manager and LINKAR REST API through your IIS web server and its configuration in any of the 3 scenarios.

THANKS

www.kosday.com

support@kosday.com