



How to: Configure Linkar with a D3 database

January 2019 - Kosday Solutions

How to: Configure  Linkar in D3

1. Install Linkar Server in your favourite platform

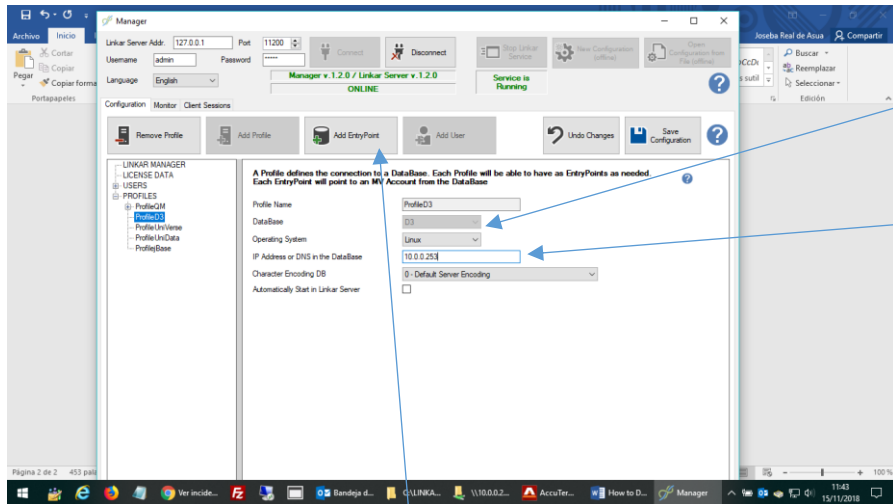
You must install Linkar Server in Windows, Linux or MacOs, somewhere with TCP/IP access to the machine where D3 is installed (even in the same machine if you want).

2. Install Linkar MV components in D3

- a. Copy file LINKAR_D3_x_y_z from the LINKAR folder in the machine where you have installed Linkar Server in the MV subfolder to any folder in the server where D3 is installed (actually this is a D3 **not compressed**).
- b. Connect to D3 with your terminal emulator and create the account where LINKAR components will be installed (usually LINKAR) and create an account for the Linkar Demo files (usually LINKAR_DEMO).
- c. Log to the LINKAR components account (f.i. LINKAR) at TCL.
- d. Open with a text editor (Notepad or similar) the file LK.PROC.INSTALL.D3.TXT and COPY all its content.
- e. Paste it in TCL in your emulator screen.
- f. Press **Y** when it ask you for Continue.
- g. It will ask you: **Input MV Components File Name with his Full Path ?** Write the complete path, filename included, where you have put the pseudofloopy.
- h. Now if you are using D3 Linux it will ask you if you want to use FlashBasic or not (if you use FlashBasic all subroutines called by Linkar must be compiled with FlashBasic). If you are using D3/NT and MVSP then FlashBasic is mandatory so you do must answer Y. . **Do you want compile with FlashBasic <Y>?**
- i. Press **Y** if you want to use flashbasic or **N** if you do not.
- j. Now the installer will ask you if you want to prepare your data accounts in order to be used with Linkar. **Do you want Enable Accounts to connect with Linkar Server <Y> ?**
- k. Press **Y**.
- l. You can insert more than one account, seperetad by an space. By now, insert the name of the demo account you have created in point b (f.i. LINKAR_DEMO). **Type your Data Accounts separated with spaces ?**
- m. Insert the name of the demo account, f.i. LINKAR_DEMO
- n. Press **Y** to next question and installer will create the demo files in the account.
- o. Installer will create all the Linkar components and will ask you where do you want to create the demo files (may be you have enable more than one account and it needs to know which is the demo account)
- p. Press the demo account name (f.i. LINKAR_DEMO).
- q. Installer will ask you how many orders you want to create in the demo ORDERS file. Choose yourself.

3. Configure Profile and EntryPoint in Linkar Manager as Permanent connections

- a. Open Linkar Manager and Connect to Linkar Server.
- b. Select Configuration and ProfileD3.

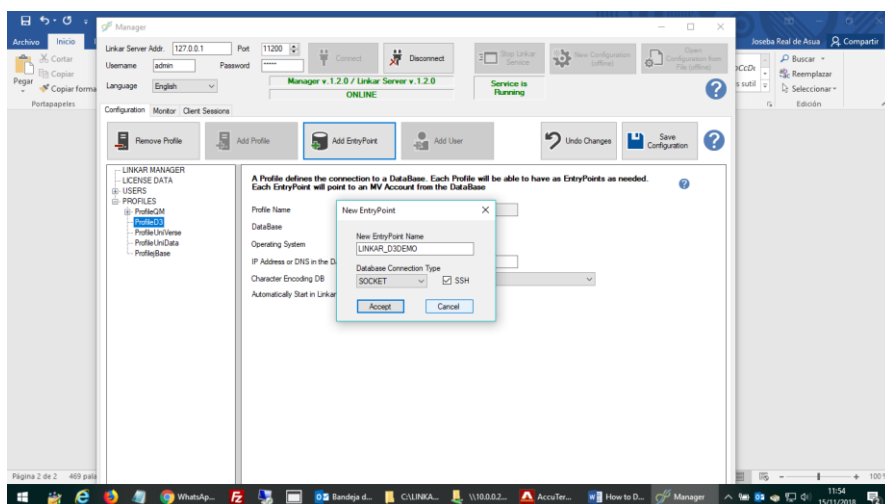


- D3 OS
- IP of the machine where D3 is installed

- c. Push **Add EntryPoint** button.

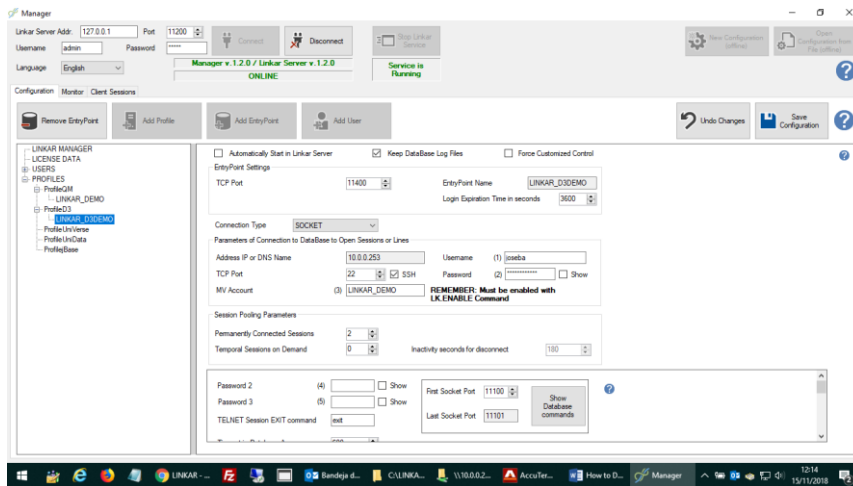
With D3/Linux you can choose between three different connection types, *SOCKET*, *MVSP* or *TELNET*. With D3/Windows *SOCKET* connections **are not allowed**. It is important to notice that if you use *MVSP* connection types, all your programs **must be compiled** whit FlashBasic. If you use *SOCKET* or *TELNET* connection types, you can choose to use or not use FlashBasic. Let's see how to configure each one:

i. *D3/UX, SOCKET connection type (not allowed in D3/Windows)*



Give a name to the EntryPoint and select SSH if you want to use SSH for starting the socket (if not it will use Telnet). We will talk about this later. Telnet or SSH are used exclusively to start sockets in this type of connection.

- d. Configure the EntryPoint



EntryPoint Settings:

Tcp Port: This is the port where **LINKAR SERVER will be listening** for the clients in order to connect to the database. It must NOT BE used in other EntryPoint and it is a TCP Port that must be free in the machine where LINKAR Server is running.

Database parameters:

IP Address or DNS name: IP or DNS name of the Machine where D3 is installed.

MV Account: Name of the data account in D3 you want to work with. For pooling: One EntryPoint works always with One account. If you want to use one EntryPoint with multiple accounts you should create Qpointers to the files you want to work with (and catalogue triggers, etc.) or use the absolute D3 reference ("account_name,filename,").

By now, we can forget the rest of database parameters.

Session pooling parameters:

Permanently connected sessions: Number of sessions that will be started in the database when the EntryPoint starts.

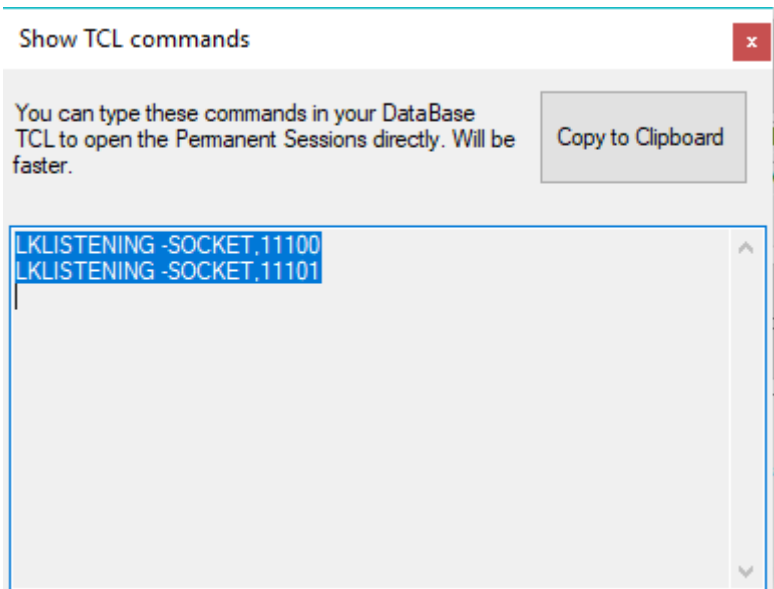
Temporal sessions on demand: By now, we will put 0 in this box.

First socket port: TCP port where the machine that runs D3 will be listening to LinkarServer inquires. This port must be free in the machine where D3 runs. If Linkar Server runs in the same machine that D3 does, it must be different to any of the ports used by Linkar Server and any other EntryPoint defined.

By now, this is enough in the D3 entry point configuration.

- e. Start *manually* the sockets in the D3 machine.

- i. If you push the **Show database commands** in Linkar manager you will see:



Go to your TCL session with D3 in **the data account you want to work with (never in the Linkar Account)** and write each line beginning with Z(SD) :

:Z LKLISTENING -SOCKET,11100

:Z LKLISTENING -SOCKET,11101

You have manually started the sockets in D3 (actually you can configure this in colsdstart taking always care that it **must start** in the data account defined in the EntryPoint).

`:list-jobs`

PHANTOM JOBS STATUS AT 12:36:06 15 Nov 2018

PAGE 1

user-md..... ln.. pib. status..... start-dt... stop-dt.... tcl-command.....

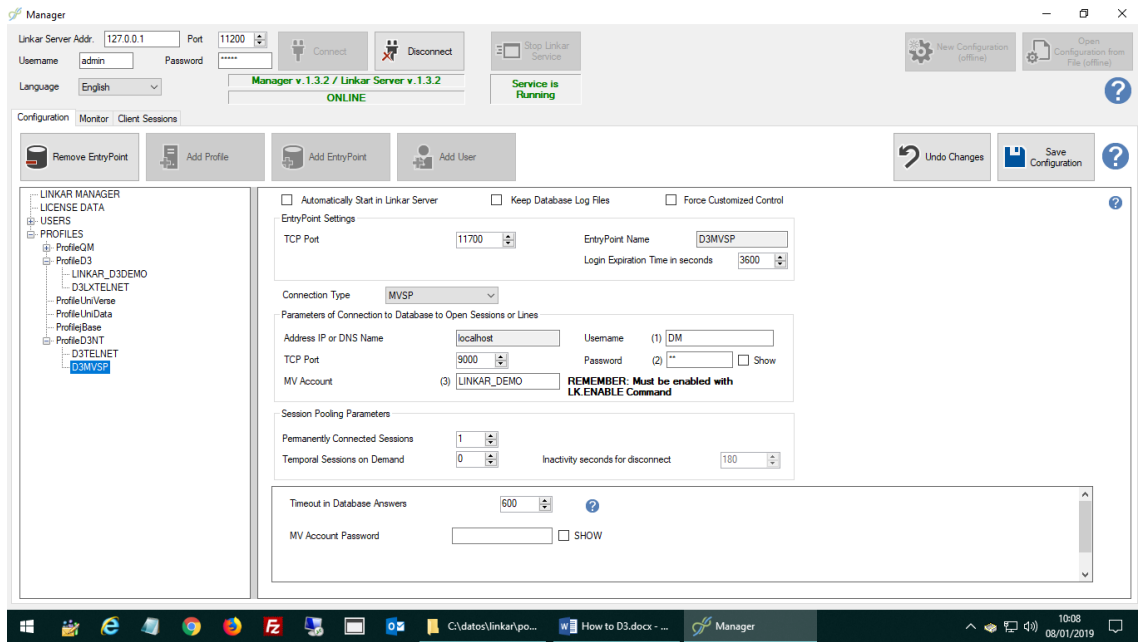
dm linkar_demo	1	66	running(1606)	15/11 12:09	LKLISTENING -SOCKET,11101
dm linkar_demo	1	65	running(1647)	15/11 12:08	LKLISTENING -SOCKET,11100

Remember that, depending on the D3 version, sockets will use licences of the database.

- f. Now start the EntryPoint from the Manager (Monitor tab, right-click the entrypoint and push Start)
- g. Start Linkar tester application and you will see everything works ok.

ii. D3 , MVSP connection type

Note: In D3/NT FlashBasic is mandatory if you use MVSP connection type



EntryPoint Settings:

Tcp Port: This is the port where **LINKAR SERVER will be listening** for the clients in order to connect to the database. It must NOT BE used in other Entrypoint and it is a TCP Port that must be free in the machine where LINKAR Server is running.

Database parameters:

IP Address or DNS name: IP or DNS name of the Machine where D3 is installed.

MV Account: Name of the data account in D3 you want to work with. For pooling: One EntryPoint works always with One account. If you want to use one EntryPoint with multiple accounts you should create Qpointers to the files you want to work with (and catalogue triggers, etc.) or use the absolute D3 reference ("account_name,filename,").

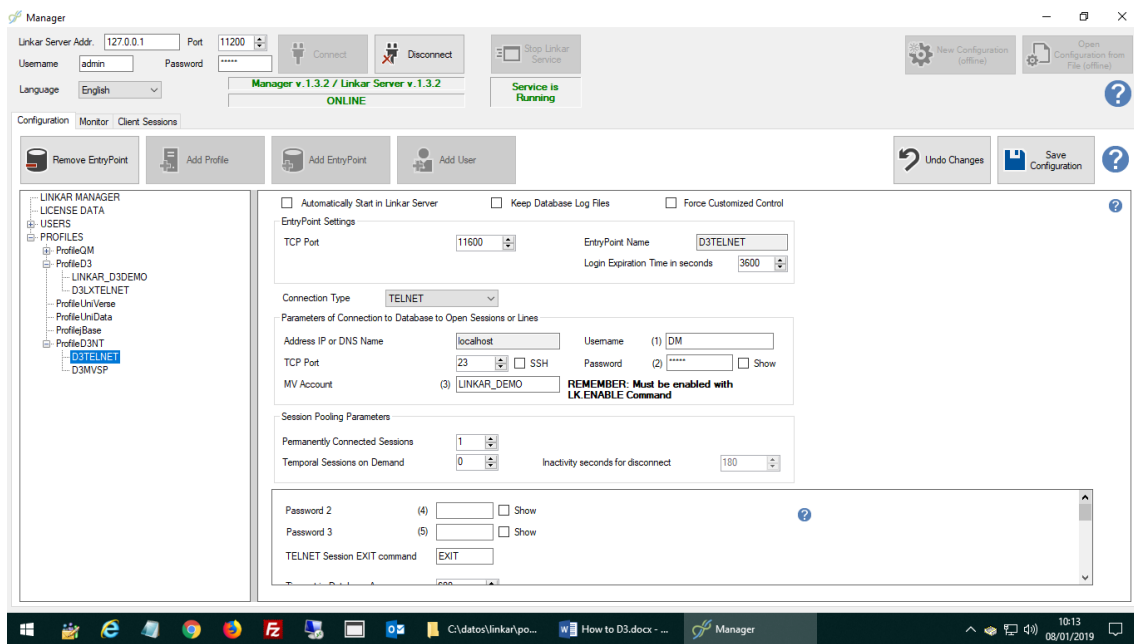
Tcp Port: This is the port where MVSP is listening. MVSP must be enabled in the account and started in the system.

Session pooling parameters:

Permanently connected sessions: Number of sessions that will be started in the database when the EntryPoint starts.

Temporal sessions on demand: By now, we will put 0 in this box.

ii. D3 , Telnet connection type



Range lines to Force in command "ap -line" or "d3 -line". Separated by semicolon (6)

Command sequence to connect to the Database

	Wait for the text	In any place	Send Text	Add CR Carriage Return	Add LF End of Line	Waiting Time in seconds next step
	user id:	<input checked="" type="checkbox"/>	dm	<input checked="" type="checkbox"/>	<input type="checkbox"/>	10
	master dictionary:	<input checked="" type="checkbox"/>	%account%	<input checked="" type="checkbox"/>	<input type="checkbox"/>	10
	:	<input type="checkbox"/>		<input checked="" type="checkbox"/>	<input type="checkbox"/>	10

	Wait for the text	In any place	Send Text	Add CR Carriage Return	Add LF End of Line	Waiting Time in seconds next step
	user id:	<input checked="" type="checkbox"/>	dm	<input checked="" type="checkbox"/>	<input type="checkbox"/>	10
	master dictionary:	<input checked="" type="checkbox"/>	%account%	<input checked="" type="checkbox"/>	<input type="checkbox"/>	10
	:	<input type="checkbox"/>		<input checked="" type="checkbox"/>	<input type="checkbox"/>	10

You can use these type of connection if you want to use Telnet or SSH. It works with D3/windows and D3/Unix. FlashBasic is not mandatory. Configuration is similar to the SOCKETS one. In order to connect you MUST define the *send-receive* grid that connects to your D3 system.

4. Configure Profile and EntryPoint in Linkar Manager as On Demand connections

- **SOCKET type connection:**

If we want to have On Demand connections (connect when needed and autodisconnect them) you must configure the Telnet or SSH parameters. Notice that it is slower than the permanent connection. Actually Linkar Server will connect to D3, Start the SOCKET, and

wait. When LinkarServer detects it is not necessary to maintain the line open it will close the socket.

- **Telnet (SSH) type connection:**

Notice that it is slower than the permanent connection. Actually Linkar Server will connect and disconnect to D3 when necessary. When LinkarServer detects it is not necessary to maintain the line open it will close the connection.